



JANUARY, 2002
2002 LANDSAILING WORLD CHAMPIONSHIP
SPECIAL EDITION

A publication of the
 North American Land Sailing Association

What's Inside...

2002 WC Notice of Race	1
Mantas Needed for Rent	1
Rooms for 2002 WC	3
Stuff You Want to Know	4
Racing Schedule	6
Pilots Registration Form	7
Model Regatta	8



Mantas Wanted for Rent to Overseas Pilots:

If you have a Manta that you would be willing to rent to an overseas pilot for the week of the World Championship, please contact Phil Rothrock at rothrock@aracnet.com. You will be paid \$150 for the week. The overseas pilot will assume responsibility for himself and the yacht.

Thanks in advance!



2002 FISLY/NALSA Landsailing World Championship: Notice of Race

Location:

Ivanpah Dry Lake, Near Primm, Nevada (USA)

Dates for the event:

Racing from Sunday, March 24, 2002 through Friday, March 29, 2002, continuing on Saturday, March 30 if necessary to complete the regatta.

Classes:

FISLY: II, III, V, Standart.

NALSA (PACRIM): II, III, IV, V, VI, Manta Twin, Manta Twin B, Manta Single, 5 Square, FED 5, and Classic.

Other classes may be included if they fit into one of the existing classes (for example: DN's and Friendships). Miniyachts will be included on a provisional basis as space permits.

Junior Fleet (Age 16 or Under):

Generally, Juniors sail in one of the Manta fleets. The starter or race official may choose to not let junior sailors sail in certain fleets under certain conditions. Refer to the Entry Fees section of the Notice of Race for registration fees for the Junior Fleet.

(continued next page)

Club Roster

American 5 Sq. Meter Assn.

Mark Harris
2027 Valencia
Sparks, Nevada 89434
Tel: (775) 355-7035
e-mail: mark@snag.org

Heart of America

Tom Wilfert
5825 Surrey Drive
Oconomowoc, Wisconsin 53066
Tel: (414) 569-9947

Manta Association

Thomas Jaszenski
e-mail: manta@dirtyboat.com

Northwest Landyacht Club

Phil Rothbrock
Oregon
Tel: (503) 281-9711
Fax: (503) 288-9955
e-mail: rothbrock@aracnet.com

SASSASS

(Sunny Acres Sipping, Sailing and Soaring Society)
Dennis Bassano
Tel / fax: (831) 423-6030
e-mail: sassass@got.net

'EMPEROR'

Mel Lyons
e-mail: karameli@earthlink.net

Sierra Area Landsailing Assn.

SALA
Kent Hatch
kent@hatchrealty.reno.nv.us

Wind Wizards

Check out the NALSA website at
www.nalsa.org

Notice of Race (cont)

Eligibility:

This is an invitational event for pilots affiliated with FISLY or NALSA(PACRIM) through their national landsailing governing bodies. All pilots must be licensed or otherwise approved as being qualified to participate in this event by their national governing body. Yachts must fit into established landsailing classes within FISLY or NALSA (PACRIM).

Number of Races:

Each FISLY class must complete three races. Each NALSA class must complete one race. No more than 10 races will be sailed in any class. There will be one throwout after completing 5 races and additional throwout after completing 10 races.

Entry Fees (US Dollars):

Entry fee for registrations sent by February 15, 2002 is \$100 for one class, and \$20 for each additional class. The fee for registrations sent after February 15 is \$140 plus \$20 for each additional class. Fees for the Junior Fleet are \$25 for one class, and \$5 for each additional class.

To avoid the complications and cost of sending money from overseas, pilots coming from overseas may pay the entry fee at the regatta check-in. North American pilots must send their entry fee by February 15th to avoid the higher late registration fee. Members of US Sailing will receive a 10% discount at check-in by providing proof of membership. Since we will not know what fleets will be in each start until check-in, we will refund any money sent for a second class that does not have a separate start from your primary class. A registration form is attached to this newsletter (see page 7).

Starts:

We will have 5 starts. The starting groups will be announced when we have a better idea of who will attend (probably just before the beginning of the regatta). If you are planning to race in more than one class, we will allow minimal time to allow an expedient exchange of yachts or sails. This will be outlined in the sailing instructions for the regatta.

Sail Numbers:

All yachts must have a registered sail number. Yachts sailing with a sail number other than the registered number will not be scored.

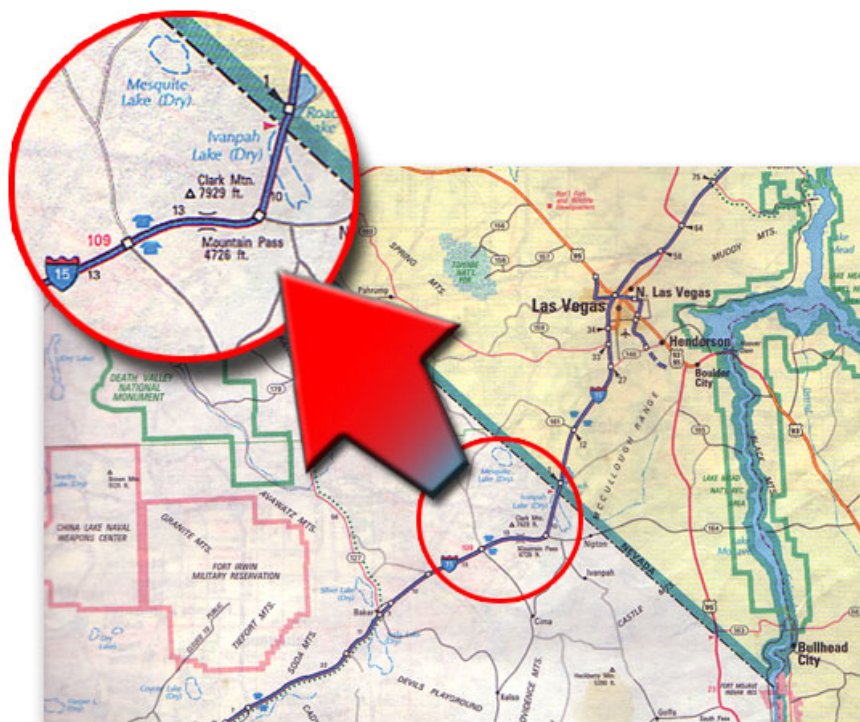
Contact Mark Harris if you need a number.. The preferred method of contact is by email at mark@snag.org. (Alternatively, Mark is available by phone at (775) 355-7035). Numbers are \$2 for each digit, and \$2 for shipping. Registration or transfer is \$2. Mark will have numbers available at check-in.

Rules:

We will be sailing with the NALSA rules, which are similar to the FISLY rules. We will post information on the differences.

(continued next page)





Ivanpah Dry Lake is located just off Interstate 15 at the California / Nevada state line, about 40 miles southwest of Las Vegas. Get off I-15 at Primm (Exit 1). Go 100 yards NE toward the Primmadonna. Turn right at the first light and drive 300 yards along the edge of the resort (SW) past to the Lotto Store where the road turns SE. About 100 yards past the Lotto Store, the road bends around to the left and there is a dirt road going through the fence on the right. Follow that dirt road toward the playa and then about 3 miles along the east edge of the lake to camp. (Camp is close to N35 deg 33', W115 deg, 23').

(continued on page 6)

Rooms for 2002 World Championship

We have made arrangements for a block of rooms at Whiskey Pete's Hotel and Casino (the hotel just off the Ivanpah Drylake). Please make a note of the magic reservation code—SNA0320—and pass it along to those wishing to make reservations. We have 75 rooms set aside at Whiskey Pete's. This is the same number of rooms occupied at PACRIM, but we will have more if necessary.

Whiskey Pete's was selected because it is the least expensive of the three hotels. Reservations can be upgraded if anyone desires more luxurious quarters. Whiskey Pete's was completely redecorated recently.

To make a reservation, phone direct to Primm Valley Resorts at 800-FUN-STOP (800-386-7867). Refer to the group code SNA0320. The 800-number may not work from overseas, so if you're calling from outside the US, dial 702-383-1212. The mailing address is 31900 S. Las Vegas Blvd., Primm, NV 89019. Reservations can also be made at www.primmadonna.com.

Motorhomes are available in Las Vegas. However, for the regatta, the casinos are very near the sailing site and are inexpensive. People without experience with motorhomes are often surprised at how much work they are when they are operated for several days away from hookups (fuel, propane, limited electricity, full holding tanks, empty water tanks, etc.).

Notice of Race (cont) Types of races:

We will be sailing timed races under NALSA rules. The length of the races will depend on conditions and circumstances. Our open sailing area and long starting line allows the fastest boats to get to the front of their fleet more quickly than is typical of more congested beach sailing courses.

Communication:

Keeping everyone informed of the latest details of the evolving regatta management plan is difficult. It is the responsibility of each pilot to keep himself apprised of what is going on. The primary method of communicating the most up to date information will be the Daily Pilots Meetings. The first will be in the tent after the opening ceremony

NALSA Special Rates for Rooms at Whiskey Pete's 2002 World Championship (double occupancy)

\$19.95 Sun-Thu
\$35.95 Fri
\$49.95 Sat

All prices are plus 9% tax and \$5.00 per additional person. Check-in time is 3:00 PM Monday thru Friday and 4:00 PM on Saturday and Sunday.

Officers

President

Bob Dill
rrdill@msn.com

Northern Vice President

Dennis Bassano
sassass@got.net

Southern Vice President

Floyd White
Las Vegas, Nevada
Tel: (702) 361-1006
floyd.white@american-national.com

Secretary

Curtis Obi
Las Vegas, Nevada
Tel: (702) 396-3236
cmobi@worldnet.att.net

Treasurer

Mark Harris
Sparks, Nevada
Tel: (775) 355-7035
Fax: (775) 355-7028
mark@snag.org

Webmaster

Jim Hart
webmaster@nalsa.org

Publications

Jon Haverstick
onekcrane@earthlink.net

From the Editor:

NALSA News is only possible with the contributions of content from landsailers and enthusiasts like yourself. If you have original artwork, cartoons, photographs, articles (technical, how-to, short stories, etc.), favorite recipes, favorite sailing sites, tips for what to do when the wind dies...basically, anything that you think would be of interest to the landsailing community, please contact me at onekcrane@earthlink.net.

I look forward to hearing from you with comments, suggestions, and your material for future issues of NALSA News.

-Jon Haverstick, Editor

Stuff You Want to Know About Ivanpah

Location:

Ivanpah Dry Lake; located on Interstate 15 at the California/Nevada border. It is about 40 miles southwest of Las Vegas.

Getting to the Site:

Get off I-15 at Primm (Exit 1, 40 mi SW of Las Vegas). Go 100 yards NE toward the *Primmadona*. Turn right at the first light and drive 300 yards along the edge of the resort (SW) past to the Lotto Store where the road turns SE. About 100 yards past the Lotto Store, the road bends around to the left and there is a dirt road going through the fence on the right. Follow that dirt road toward the playa and then about 3 miles along the east edge of the lake to camp. (Camp is close to N35 deg 33', W115 deg, 23').

Note: there is a wash (dry streambed) just past the fence that may be difficult for some vehicles.

When on the playa, do not stray far from the road along the east edge of the lake. If there are any puddles or wet areas on the playa do not drive through them as they are very soft and the ruts you will leave will take years to fill in.

Conduct on the Playa:

Ivanpah Dry Lake is owned by the US Government's Bureau of Land Management (BLM) who issues the permit for our regatta on their lake. Some of the requirements of the permit include:

- Drive only on the road to camp (only race officials are permitted to drive on the main part of the lake).

- Drive around (not through) any wet areas.
- Please use the porta-potties or other appropriate facilities.
- Please pick up all trash (yours and others).
- Try to collect drill shavings (on a tarp?), bits of tape, wood, and other small debris as they are difficult to pick up once they are loose on the playa.

We will have a dumpster, a few trashcans and plenty of garbage bags on site. Please bag all garbage and please tie the bags closed to prevent garbage from blowing out of the dumpster if we get a big wind.

There are many other restrictions associated with the BLM permit. The permit will be posted on the Official Bulletin Board by the entrance to the tent. We ask that all visitors read it.

Rain:

There is always a possibility that it may rain during the regatta and that we may have to get off the lake. The playa surface is mostly clay, and it gets very slippery and sticky with even a small amount of water on it. Once wet it's often impossible to move vehicles off the playa until it dries out (often a

(continued next page)





few hours, but it can take up to several weeks after a big rain). If rain is threatened we will try to notify people. However, each person on the playa will be expected to use his or her own judgment about how soon to get off. In the event of a hard rain, the playa will be impassable within just a few minutes.

About once every 20 years the playa is too wet to sail on. We have two nearby back up sites (Ivanpah on the north side of Interstate 15, and Roach Lake). Jean Lake is about 15 miles away. If the entire Las Vegas area is wet we may be forced to go farther afield. If we do need to move we will help visiting sailors get their equipment to the new site. We have only moved once (Edward's Creek in 1992) and it was a great regatta. If this is looking like a possibility, we will keep you informed with regular updates to the NALSA website (www.nalsa.org).

Logistics:

The easiest way to get to the site by plane is through Las Vegas. There are many car rental agencies at the airport. Vans and pickup trucks can be rented as well. We will have some sort of shuttle service from the airport for

people and gear. We will post more details on this on the website as the time gets closer.

If you are shipping a container and would like some advice or support from this end, contact Kent Hatch via email at kent@hatchrealty.reno.nv.us. Be sure you get any containers on the way early enough. Past experience has been that they often arrive on the site later than you originally planned. It would be unfortunate to have a container arrive halfway through the regatta!

Yachts to Rent or Borrow:

NALSA is working on arrangements for a fleet of Manta Twins. If you are interested, contact Bob Dill, NALSA President, by email at rrdill@msn.com.

Sights to See Around the Area:

Our experience has been that visitors have been happier finding their own way around than participating in tours arranged by NALSA. On the urban side, there is a large group of high-end clothing stores associated with the casinos. Las Vegas is only an hour away, and there are busses from the casino to down town Las Vegas. Los Angeles is about five hours away by car. San Francisco is about an eight hour drive.

On the natural side, Ivanpah is in the middle of some of the most spectacular scenery in the world. Grand Canyon is about a four hour drive, and Zion Canyon (Bob Dill's favorite) is about the same. Yosemite (the most spectacular park in the US) is about eight hours by car. Death Valley is about three hours. Red Rock Canyon and Hoover Dam are about an hour's drive from the lake. There are also lots of places to see and things to do in the hills around the lake. All these places are beautiful from a car and most are even more spectacular with a bit of walking. Bring your hiking boots! Contact Bob Dill at rrdill@msn.com for more suggestions.

(continued next page)



Notice of Race (cont)

on Sunday, March 24. For the rest of the week, Pilots Meetings are scheduled for 9:00 AM each day (note: this time can be changed by the race committee). There will also be an Official Bulletin Board located just inside the tent that will have a wide range of information posted on it. It will be updated periodically.

If you have questions or suggestions, see the Race Manager (Bob Schumacher), the Starter (Steve Brown), or the Regatta Manager (Bob Dill). Talking to the scorers during or between races is not permitted. If you have a concern permitted. If you have a concern about scoring, see the Race Manager, Starter or other race official

Updates:

The information outlined in this Notice of Race may be changed as regatta planning evolves. The most up-to-date information can be found on the NALSA website at www.nalsa.org. The Sailing Instructions and information provided at Pilot's Meetings may supersede the Notice of Race.



Racing Schedule:

Saturday March 23:

- Noon to 5:00 PM - Check-in/Registration at the site (in the tent)

Sunday, March 24:

- 9:30 AM to 10:45 AM - Check-in/Registration at the site (in the tent)
If you are registered and will be late arriving, please phone the Race Manager (Bob Schumacher) at (802) 238-8099 (leave a message if necessary). If registration or check-in is necessary after 10:45 AM on Sunday, contact the Race Manager.
- 11:00 AM - Opening Ceremony
- 11:30 AM - Pilots Meeting. This is a mandatory meeting for all pilots. Start cards will be handed out at this meeting. It will take place in the tent.
- 12:30 PM to 6:00 PM - Racing
- 5:00 PM - Opening night cookout on the playa. NALSA will provide drinks and a light snack.

Monday, March 25

- 9:00 AM - Pilots Meeting (*Please be there as things change from day to day*)
- 9:30 AM to 6:00 PM - Racing (unless otherwise announced)

Tuesday, March 26

- 9:00 AM - Pilots Meeting (*Please be there as things change from day to day*)
- 9:30 AM to 6:00 PM - Racing (unless otherwise announced)

Wednesday, March 27

- 9:00 AM - Pilots Meeting (*Please be there as things change from day to day*)
- 9:30 AM to 6:00 PM - Racing (unless otherwise announced)
- Evening - Cookout on the playa

Thursday, March 28

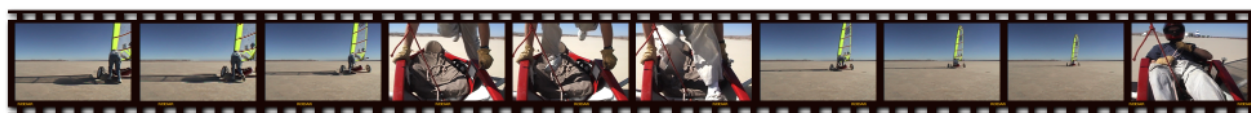
- 9:00 AM - Pilots Meeting (*Please be there as things change from day to day*)
- 9:30 AM to 6:00 PM - Racing (unless otherwise announced)

Friday, March 29

- 9:00 AM - Pilots Meeting
- 9:30 AM to 3:00 PM - Racing. (*Note: racing will end at 3:00 PM if the regatta is complete.*)
- Evening - Banquet on the playa. Awards will be presented at the evening banquet (assuming we have a completed regatta)

Saturday, April 1

If necessary, racing will continue through the day with sailing only in those fleets that have insufficient races to complete the regatta.



FISLY/NALSA Landsailing World Championship

Registration Form

If you are confident you are coming, please pre-register before February 15, 2002. This will help your committees to prepare trophies, estimate food amounts and set up scoring. It will cost \$40 more to register at the site.

Name

National Federation

Street

Club Affiliation

City

State

Zip

Country

Phone: _____

email: _____

Yacht Entries

Fee: Before February 16, 2002: \$100 + \$20 for each additional class.

Fee after February 15, 2002: \$140 + \$20 for each additional class.

Class

\$

Sail Number

Type or Manufacturer

Make checks payable to NALSA. Send Entry form and check to: NALSA, Mark Harris, 2027 Valencia Way, Sparks, NV 89434.

Release and Certification

In consideration for my participation in the Americas Land Sailing Cup Regatta, I hereby release and hold harmless the North American Land Sailing Association (NALSA), its officers and agents from any and all liability for any damage or injury to my person or property sustained in such regatta, whether such damage or injury be due to negligence of said association, its officers or any other cause. It is the sole and exclusive responsibility of each skipper to decide whether or not to start or continue a race.

Pilots Signature _____ Date _____

Parent or Guardian Signature _____ Date _____
(required if Pilot under 19)

Regatta Within the Regatta

The cadre of model landsailors is on the rise, largely due to the organizational efforts of Bob Costa and IRCSSA (International Radio Control Surface Sailing Association) and a growing number of manufacturers of high-quality model landyachts. It's becoming increasingly common to see landsailors unload a full-size boat from the roof of the car, and an RC model from the trunk.

IRCSSA will be sponsoring a Model Landsailing World Championship regatta if conditions permit during the 2002 FISLY/NALSA Landsailing World Championship event: complete with trophies and other appropriate awards. Find out more from Bob Costa (bob_costa@hotmail.com) or Robert Weber (ModelLandYachts@earthlink.net).



A note to overseas model landsailors: There are a number of US manufacturers of high-quality model landyacht kits. If the cost of overseas shipping has put you off ordering the model you've always wanted, some of the manufacturers will have kits on hand for purchase at the World Championship event. Save yourself the cost of shipping, and take it home with you! Contact any of the manufacturers listed below for more details.

Model LandYachts, Unlimited

1177 Mt. Doble
Big Bear City, CA 92314
(909) 585-2372
ModelLandYachts@earthlink.net

Coldfront Model Yachts

80 Florence Drive, Excelsior, MN 55331
(952) 470-8818
tonyj@visi.com

Performance RC Landsailors

93 Soundview Ave. 2nd Floor
Norwalk, CT 06854
kseluga@rclandsailing.com



Important Date:
Register by February 15, 2002
to save on entry fees!
(Registration form enclosed)